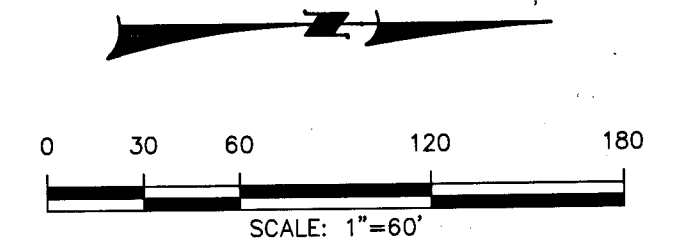


# HAZELWOOD VILLAGE SUBDIVISION NO. 13

LOCATED IN THE NE 1/4 AND THE SE 1/4 OF SECTION 3, TOWNSHIP 2 NORTH, RANGE 1 EAST,  
BOISE MERIDIAN, ADA COUNTY, IDAHO.  
A DEVELOPMENT BY SKYLINE-HV, INC.

2016

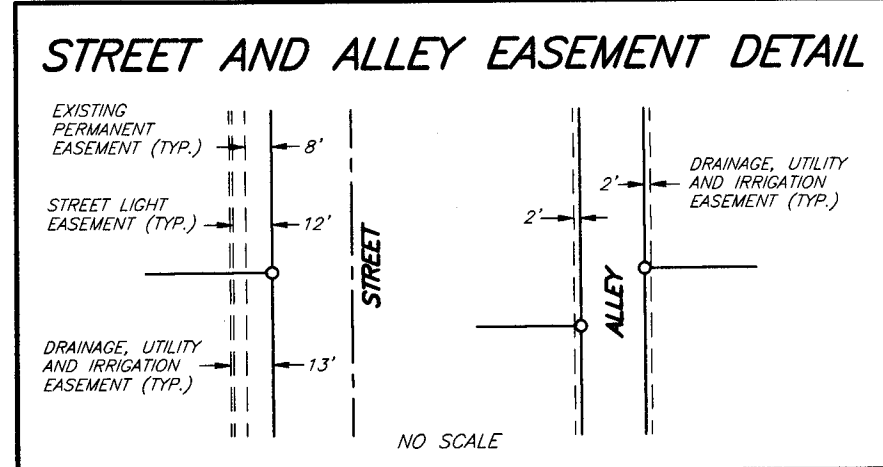
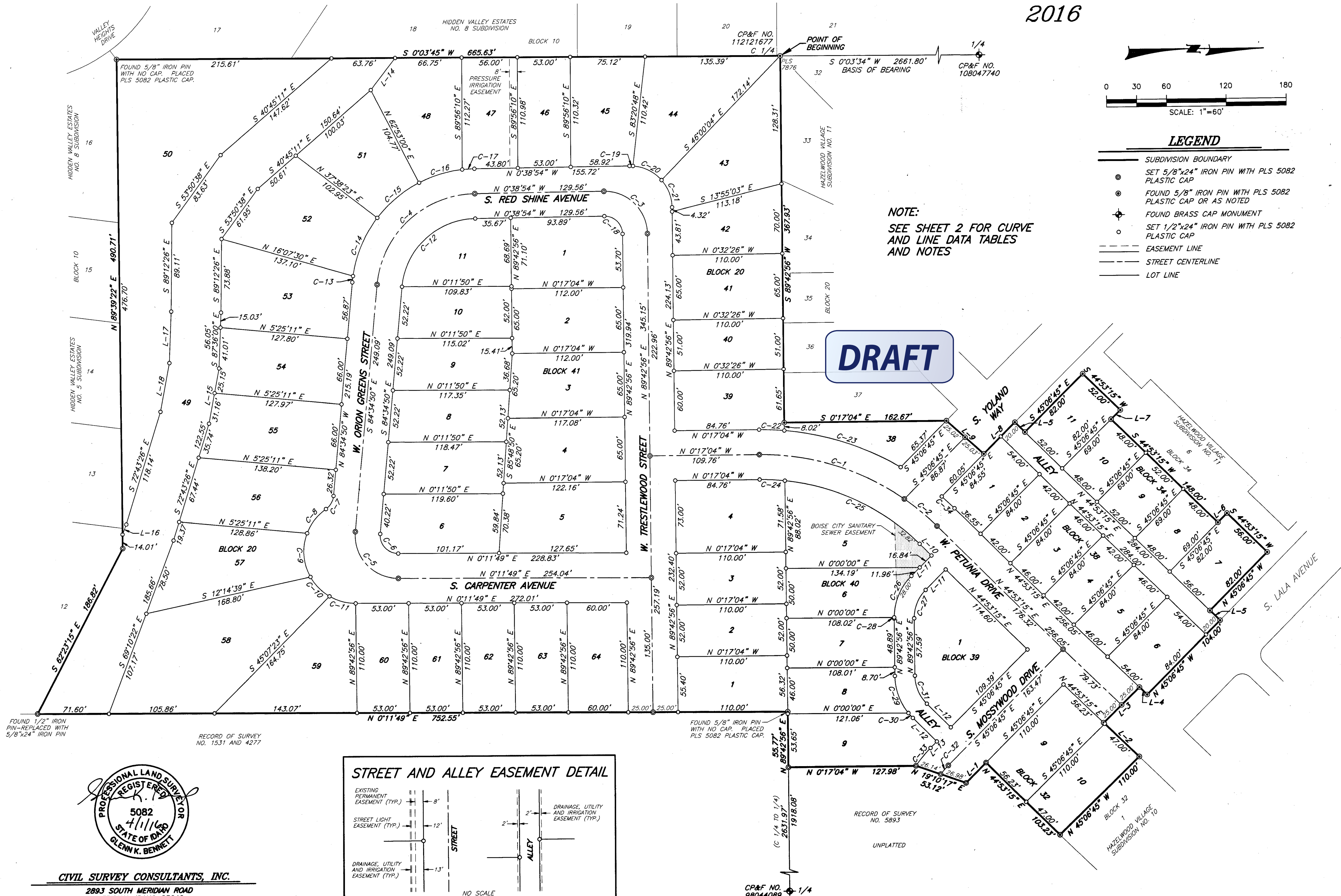


### LEGEND

- SUBDIVISION BOUNDARY
- SET 5/8"x24" IRON PIN WITH PLS 5082 PLASTIC CAP
- FOUND 5/8" IRON PIN WITH PLS 5082 PLASTIC CAP OR AS NOTED
- ⊕ FOUND BRASS CAP MONUMENT
- SET 1/2"x24" IRON PIN WITH PLS 5082 PLASTIC CAP
- - - EASEMENT LINE
- - - STREET CENTERLINE
- LOT LINE

NOTE:  
SEE SHEET 2 FOR CURVE  
AND LINE DATA TABLES  
AND NOTES

**DRAFT**



**CIVIL SURVEY CONSULTANTS, INC.**  
2893 SOUTH MERIDIAN ROAD  
MERIDIAN, IDAHO 83642  
(208) 888-4312

CP&F NO. 98044089